

2025 CATALOGUE

MANUFACTURING OF ALL UNIFORMS AND CLOTHING



Dear Client, please note our order instructions for new uniforms.

1) Order process:

- A sales consultant will be allocated to each client, he/she will aid from enquiries to order placements right through to deliveries and any comebacks that might occur.
- Once an order is finalized "B Uniform and Clothing" will send an invoice with all the required information including a detail item list, delivery date and payment information.
- Your agreement is confirmed with a 50% deposit.
- Our delivery date is calculated from when the deposit reflects in our bank account. On average it is 4 weeks, but due to a number of contributing factors the final delivery date will be confirmed on the invoice.
- Final payment is due on day of delivery.
- Full inspect list must be signed to ensure the right products have been delivered and received.
- From full delivery date there is a 7-day period to inform us of any issues related to the order. We never plan for mistakes but if any exists, we will adjust or replace those items as soon as possible. Our commitment is to deliver what is on the invoice and we are driven to keep all our clients happy for future business with them.

2) Requesting Sales Consultant on site:

- Gauteng Area
- When an order is going to be more than 10 units a sales consultant will gladly visit to do the measurements themselves.
- When the order is going to be 10 units or less a sales consultant can be requested to be onsite to do the measurements but then a call out fee will apply depending on distance needed to travel.
- Outside Gauteng Area
- Sales consultant can be requested to take the measurements but then a call out fee will apply depending on distance needed to travel.

3) Sales Consultants Responsibility when on site.

- The Sales Consultant will supply samples and aid with the various products available as well as give advice according to the client's specific needs and requirements.
- They will have a fitting range available for standard sizes to make measuring many people easy and fast.
- When a standard fitting range size is not suitable then physical measurements will be taken to tailor make that individual uniform.

4) Exchange / refund policy:

- No refund or returns will be accepted on orders made to specification.
- “B Uniform and Clothing” cannot be held liable for any alterations or replacements of incorrect items where measurements were not done by our sales consultants. Adjustments and/or replacements under this condition can be requested at an additional cost to the customer.
- “B Uniform and Clothing” will be liable for adjustments and/or replacements of incorrect items where measurements were done by one of our sales consultants.
- An exchange / refund form must be filled out and send to the sales consultant within 7 days from delivery with all items specified that needs to be exchanged or refunded.
- If an item is to be exchange:
- Original packing must be supplied.
- Items must be in original state: unworn, unwashed with all tags intact.
- Turnaround time will be the same as time took for original order.

5) Minimum order quantity:

- We have a minimum of 2 sets per person per style and color.
- If a single unit is needed, an additional 20% will be added to that item.

6) Custom made:

- We pride ourselves in aiding clients with creating unique designs, please discuss the options and possibilities with your sales consultant/s.
- Consider style changes like buttons instead of zips and removing trim areas etc.
- Pockets are usually standard on most styles, adding or removing pockets can be done on request.
- Sourcing of a unique trim color or matching trim is also something we offer on request.
- Distinctive design uniforms can be done if samples are provided.

7) Branding:

- We provide branding solutions like embroidery or printing.
- Prices normal start at around R35 per item depending on the requirements, feel free to discuss with your consultant.

8) Fabrics:

- When it comes to fabrics, we pride ourselves in working with fabrics that are continuously available and of the highest quality, hence us recommending the following:
- TS-FIT wash and wear fabric are 100% polyester which will not fade after several washes and does not shrink or stain easily, unless exposed to bleach. This is recommended for the spa, salon, medical and hospitality industry. This fabric has slight mechanical stretch for ease of movement.
- PV-PRO is a 35% viscose and 65% polyester blend. The viscose content easily absorbs moisture, will fade slightly over time, and will not shrink. Usually recommended and widely use for the medical industry. This fabric has no stretch.
- PV-FLEX is a 32% viscose, 64% polyester and 2% spandex blend. The viscose content easily absorbs moisture, will fade slightly over time, and will not shrink. Usually recommended and widely use for the medical industry. The spandex allows for subtle stretch making it super comfortable. This fabric is recommended for the spa, salon, medical and hospitality industry.

Please discuss your requirements and expectations with us, we are flexible and will do our best to work around your needs.

FABRIC TYPES

QUALITY-
TETREX

WIDTH-
147/148CMS

ESTIMATE WEIGHT(GSM)-
190 GSM

COMPOSITION-
80% POLYESTER 20% VISCOSE

USES-
TUNICS, SCRUBS, JACKETS



QUALITY-
TROPICAL STRETCH

WIDTH-
147/148CMS

ESTIMATE WEIGHT(GSM)-
190 GSM

COMPOSITION-
86%POLYESTER 10%RAYON
4%SPANDEX

USES-
TUNICS, SCRUBS, JACKETS



QUALITY-
POLYESTER

WIDTH-
147/148CMS

ESTIMATE WEIGHT(GSM)-
180 - 190 GSM

COMPOSITION-
100% POLYESTER

USES-
TUNICS, SCRUBS, JACKETS



QUALITY-
POLY VISCOSE

WIDTH-
147/148CMS

ESTIMATE WEIGHT(GSM)-
185 GSM

COMPOSITION-
66.5% POLYESTER 35% VISCOSE

USES-
TUNICS, SCRUBS, JACKETS



QUALITY-
POLY RAYON

WIDTH-
147/148CMS

ESTIMATE WEIGHT(GSM)-
255 GSM

COMPOSITION-
60% RAYON 38% NYLON
2% SPANDEX

USES-
TUNICS, SCRUBS, JACKETS





DESCRIPTION

Modern design, details and super functional features. The Jude has a mandarin collar and shirttail hem, multiple pockets, an oversized fit.

SPECIFICATIONS

- Total of three pockets
- Two-deep welt hand pockets
- Oversized fit (Size down for a classic fit.)
- Draped drop-shoulder silhouette with shirttail hem
- Back yoke with box pleat



JASMIN SCRUB

DESCRIPTION

Each chic and versatile style is made to be comfortable and functional with a graceful, flattering fit and attention to detail. And with 4-way stretch, you can easily move

SPECIFICATIONS

- Modern fit
- Mandarin collar with snap closure placket
- Total of 3 pockets
- 2 front in seam pockets
- 1 left chest patch pocket
- Short sleeve
- Contrast print trim inside neck and sleeves
- Back inverted pleat
- High-low hem
- Tuck in or wear out



JUDE SCRUB WITH
- MANDARIN COLLAR



DESCRIPTION

If you require more than a single pocket, the Lily is the perfect solution, featuring a contemporary neckline, 3 pockets, and our exclusive four-way stretch material

SPECIFICATIONS

- Crafted with our exclusive fabric
- 4-way stretch
- Antimicrobial technology
- Total of three pockets
- Classic fit
- Contemporary neckline
- Side-slit hem



LILY SCRUB TOP



DESCRIPTION

This classic design allows you to wear your top as loose or tight as you feel comfortable. The v-neck wraps around the front, and ties at the back. The front is sewn closed so you don't have to worry about staying covered up! It has 2 patch pockets and slits up the side for comfort with movement

SPECIFICATIONS

- Crafted with our exclusive fabric
- 4-way stretch
- Antimicrobial technology
- Total of three pockets
- Classic fit
- Contemporary neckline
- Side-slit hem



ELLIE WRAP TOP

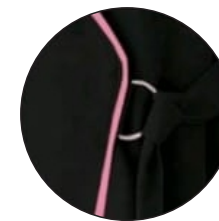
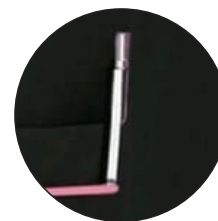


DESCRIPTION

This classic design allows you to wear your top as loose or tight as you feel comfortable. The v-neck wraps around the front, and ties at the back. The front is sewn closed so you don't have to worry about staying covered up! It has 2 patch pockets and slits up the side for comfort with movement

SPECIFICATIONS

- Crafted with our exclusive fabric
- 4-way stretch
- Antimicrobial technology
- Total of three pockets
- Classic fit
- Contemporary neckline
- Side-slit hem



ALICE WRAP SET
TOP & PANTS

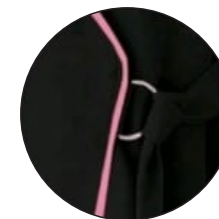
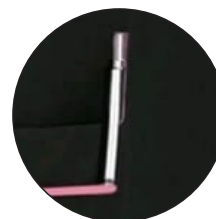


DESCRIPTION

If you require more than a single pocket, the Lilly is the perfect solution, featuring a contemporary neckline, 3 pockets, and our exclusive four-way stretch material

SPECIFICATIONS

- Crafted with our exclusive fabric
- 4-way stretch
- Antimicrobial technology
- Total of three pockets
- Classic fit
- Contemporary neckline
- Side-slit hem



ALICE WRAP TOP



DESCRIPTION

The Classic Range scrub set is a unisex scrub that includes both pants and a top. We consulted with medical professionals to design the optimum scrub, they are well crafted from a thick and tough material to provide added durability and comfort for those long and intensive hours.

SPECIFICATIONS

- Pen Holders
- Velcro-lined inner pockets
- Comfy elasticated pants with a soft drawstring
- Machine wash
- Tumble dry friendly
- Long-lasting shape



CLASSIC NURSE SCRUB
TOP WITH POCKETS



DESCRIPTION

Tulip style sleeves and tulip petals hem Scrub Set with V neck, yes top and pants! Extreme comfortable and breathable fabric makes you love this set!
Let your element shine through.

SPECIFICATIONS

- Spandex-stretch moisture-wicking fabric
- Super-soft touch
- Knit ribbed waist with drawcard
- Mid-rise
- Soil-release fabric



TULIP TOP WITH WAIST
DETAIL



DESCRIPTION

Boasting a banded curved neckline and front and back princess seams for a flattering silhouette and features a chest patch pocket with shoulder badge loop for added functionality. With an overlapping tulip effect at the back hem and high-low hem for a stylish touch, this top is crafted from comfort knit fabric with 360 stretch, ensuring moisture-wicking.

SPECIFICATIONS

- Tailored Fit
- Chest Pocket
- Darted back
- Side-Slit Hem
- Modern V Neck
- Reinforced Seams



CORE CLASSIC SCRUB



DESCRIPTION

The classic V-shaped neckline optically elongates the silhouette, the waist tapered cut emphasizes the assets of the figure, and the length of the sleeves (reaching almost to the elbow) provides protection for the shoulders, while not restraining movement.

SPECIFICATIONS

- Tailored Fit
- Chest Pocket
- Darted back
- Side-Slit Hem
- Modern V Neck
- Reinforced Seams



DALCIA SCRUB
TOP



DESCRIPTION

Modern design, a drapey contour and mandarin style collar makes this beauty the first of her kind in SA. With two neatly slanted side pockets The Emma top is also the perfect top to wear tucked in!

SPECIFICATIONS

- Tailored Fit
- Chest Pocket
- Darted back
- Side-Slit Hem
- Modern V Neck
- Reinforced Seams



PANTSY SCRUB
TOP & SET



DESCRIPTION

For the most flattering fit for all body types. The lightweight and flexible material that allows for mobility while the breath ability and soft touch allows for an effortless wear

SPECIFICATIONS

- Tailored Fit
- Chest Pocket
- Darted back
- Side-Slit Hem
- Modern V Neck
- Reinforced Seams



OLIVIA SCRUB
TOP



DESCRIPTION

The medical top from the Creative One collection offers comfort and functionality throughout the day. Its loose design includes four practical pockets and a shoulder band for Ids.

SPECIFICATIONS

- Tailored Fit
- Chest Pocket
- Darted back
- Side-Slit Hem
- Modern V Neck
- Reinforced Seams



PETUNIA SCRUB
TOP



DESCRIPTION

This scrub has been made from premium stretch material. It is soft, breathable, and easy to wash & dry (no ironing needed).

SPECIFICATIONS

- Tailored Fit
- Chest Pocket
- Darted back
- Side-Slit Hem
- Modern V Neck
- Reinforced Seams



DAISY TWO TONE
SCRUB TOP



DESCRIPTION

Our sets are more fitted than the usual scrubs, please ensure to select the correct size by referring to our size chart. Size up for a more loose fit.

SPECIFICATIONS

- Tailored Fit
- Darted back
- Side-Slit Hem
- Modern V Neck
- Reinforced Seams



ROSE TOP



DESCRIPTION

Our sets are more fitted than the usual scrubs, please ensure to select the correct size by referring to our size chart. Size up for a more loose fit.

SPECIFICATIONS

- Tailored Fit
- Darted back
- Side-Slit Hem
- Modern V Neck
- Reinforced Seams



ROSE TOP AND
PANTS



DESCRIPTION

This scrub has been made from premium stretch material. It is soft, breathable, and easy to wash & dry (no ironing needed).

SPECIFICATIONS

- Tailored Fit
- Chest Pocket
- Darted back
- Side-Slit Hem
- Modern V Neck
- Reinforced Seams



UNI-C TOP



DESCRIPTION

Unlike conventional coated technologies, spill-repellent technology is woven into the fibers of the fabric thus maintaining the natural feel & breath ability of each garment and protects you against whatever Life (or your Patient) throws at You.

SPECIFICATIONS

- Tailored Fit
- Chest Pocket
- Darted back
- Side-Slit Hem
- Modern V Neck
- Reinforced Seams



CLASSIC NURSE PRINTED SCRUB

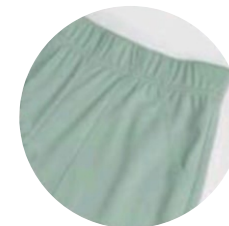


DESCRIPTION

This scrub top improved the details of square junction for V-neckline, and the pants with cargo style are practical and functional for multiple details.

SPECIFICATIONS

- Tailored Fit
- Chest Pocket
- Darted back
- Side-Slit Hem
- Modern V Neck
- Reinforced Seams



PETAL SCRUB
SET



DESCRIPTION

Our scrubs uniforms are designed with both functionality and style in mind, ensuring that healthcare workers can perform their duties comfortably and confidently.

SPECIFICATIONS

- Tailored Fit
- Chest Pocket
- Darted back
- Side-Slit Hem
- Modern V Neck
- Reinforced Seams



POPPY TWO TONE SHOULDER SCRUB SET



DESCRIPTION

The Queenie is the perfect combination of comfort, style and luxury. In our Antimicrobial Luxury Stretch Fabric.

The Queenie Luxury Stretch offers the most flattering fit whilst giving you the comfort to Work and Treat in Style like a real Queen.

SPECIFICATIONS

- Tailored Fit
- Chest Pocket
- Darted back
- Side-Slit Hem
- Modern V Neck
- Reinforced Seams



QUEENIE SCRUB
SET



DESCRIPTION

This scrub tunic top suit for various kinds of work situations, such as spa, chef, vet, clinic, med school, beauticians, hairdressers, waiters, cooks, electricians, etc.

SPECIFICATIONS

- Tailored Fit
- Chest Pocket
- Darted back
- Side-Slit Hem
- Modern V Neck
- Reinforced Seams



GAMMA UNISEX
SCRUB TOP



DESCRIPTION

This scrub tunic top suit for various kinds of work situations, such as spa, chef, vet, clinic, med school, beauticians, hairdressers, waiters, cooks, electricians, etc.

SPECIFICATIONS

- Tailored Fit
- Chest Pocket
- Danted back
- Side-Slit Hem
- Reinforced Seams



MOBI UNISEX
SCRUB TOP



DESCRIPTION

This is a must-have tunic for every busy scrub professional. Comes in a variety of colours to fit your style and personality so you can feel confident while wearing it. It features short sleeves, a v-neckline, and side slits to give you additional comfort as well as a button detail on the neckline so you can customise your look.

SPECIFICATIONS

- Tailored Fit
- Chest Pocket
- Darted back
- Side-Slit Hem
- Modern V Neck
- Reinforced Seams



BENJI / SCRUB
TOP MEN



DESCRIPTION

The Porter Top is a versatile, terry knit mid layer, designed with comfort in mind. Made with Lyocell, a material derived from FSC approved wood, which is soft against the skin, provides efficient moisture management and offers a natural odour resistance, whatever the adventure. A go-to top that will see you through each season.

SPECIFICATIONS

- Tailored Fit
- Darted back
- Side-Slit Hem
- Modern V Neck
- Reinforced Seams



PETER TOP
MEN



DESCRIPTION

Step up your corporate style with our collection of men's lounge shirts. These timeless classics feature crisp lines and quality finishes that never go out of fashion. Made from crease-resistant and durable cotton and polycotton fabrics, our range of long and short sleeve shirts ensures that you always look sharp and professional.

SPECIFICATIONS

- Tailored Fit
- Darted back
- Modern V Neck
- Reinforced Seams



LAURIE LOUNGE
SHIRT MEN



DESCRIPTION

This is a must-have tunic for every busy scrub professional. Comes in a variety of colours to fit your style and personality so you can feel confident while wearing it. It features short sleeves, a v-neckline, and side slits to give you additional comfort as well as a button detail on the neckline so you can customise your look.

SPECIFICATIONS

- Blooming in Winter
- High waist
- Double button and zip closure
- Velvet feel
- Side pockets
- Double front pleat



LINA PANTS



DESCRIPTION

This style's fabric has an eye catching shine finish that's fully breathable and comfortable, whether you're working out or going out. Moisture wicking capabilities keep you cool, while 4 way stretch provides you with optimal freedom of movement

SPECIFICATIONS

- Breathable
- Stash pocket
- 4-way stretch
- Gusset
- Chafe free flat seams

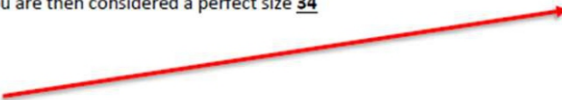


KARA LEGGINGS

Alternatively - If you want to order **Standard** sizes – look the table below

Ordering Standard sizes:

If you order a size 34 for example, your bust measurement should be between 87 - 92 and your hip measurement between 95 - 100; You are then considered a perfect size 34



TIP
Measure the area of your body in a relaxed position, Tape against the body - one finger inside the tape

Always get a **BUDDY** to help you with your measurement



To determine the size to order, measure yourself and if your bust measurement is 95 and your hip (Fulltest Part) is 110 (for example) - You would be classified as a size 36 Bust (top) and a 38 Hip (Bottom) - Therefore you should order accordingly - Alternatively provide measurements, and we'll do the rest.

WOMENSWEAR SIZING TABLE

LADIES SIZE CHART									
All ladies garments	28	30	32	34	36	38	40	42	Body measurements Body measurements etc
	4	6	8	10	12	14	16	18	
Bust (measurement in C)	74-78	77-82	82-87	87-92	92-97	97-102	102-107	107-112	
HIP	80-85	85-90	90-95	95-100	100-105	105-110	110-115	115-120	
For Cindy apron only	XS		S		M		L		

All ladies garments	44	46	48	50	52	54	52	54	56	58	Body measurements Body measurements etc
	20	22	24	26	28	30	28	30	32	34	
Bust (measurement in C)	112-117	117-122	122-127	127-132	132-137	137-142	132-137	137-142	142-147	147-152	
HIP	120-125	125-130	130-135	135-140	140-145	145-150	140-145	145-150	145-150	150-155	
For Cindy apron only	XL		2XL		3XL		4XL		5XL		



CONTACT US

BONITA DE LANGE

082 321 4430

bonita@buniformclothing.co.za

ELAINE LE ROUX

082 411 4956

elaine@buniformclothing.co.za

www.buniformclothing.co.za